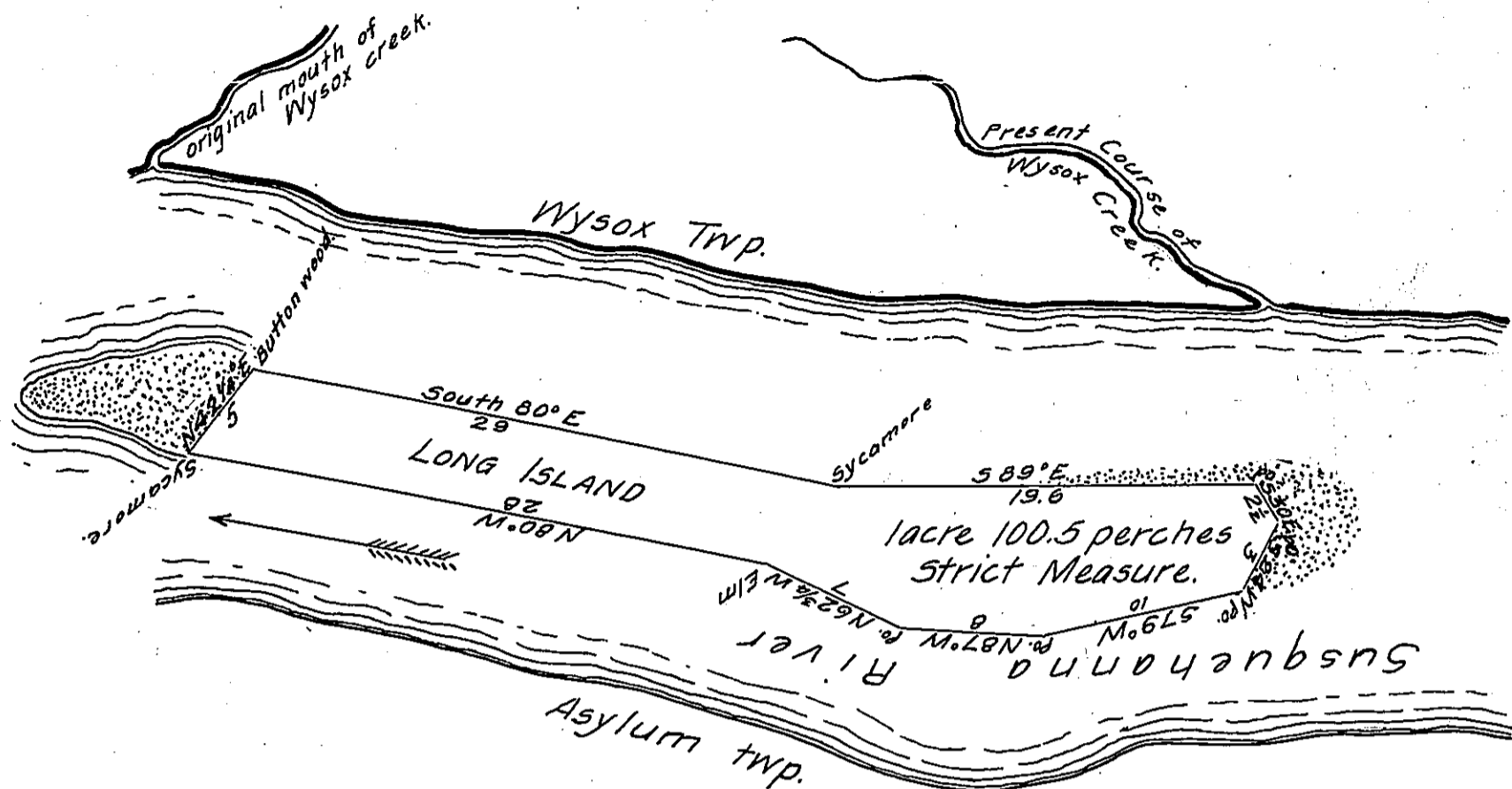


FORM No. 1.

Survey of Long Island situated near the mouth of Wysox Creek in Susquehanna River



Draught of an Island in the river Susquehanna (near the mouth of the Wysox Creek) in Bradford County Pa. Containing one acre and one hundred & 5/10 perches strict measure. Surveyed February 8th 1865 for William H. Morgan on his Warrant dated February 1st AD. 1865.

J. J. Newell C. S.

To James P. Barr Esqr. S. G. }

IN TESTIMONY that the above is a copy of the original remaining on file in the Department of Internal Affairs of Pennsylvania, made conformably to an Act of Assembly approved the 16th day of February, 1833, I have hereunto set my Hand and caused the Seal of said Department to be affixed at Harrisburg, this twenty-first day of April 1906.

James P. Barr
Secretary of Internal Affairs.